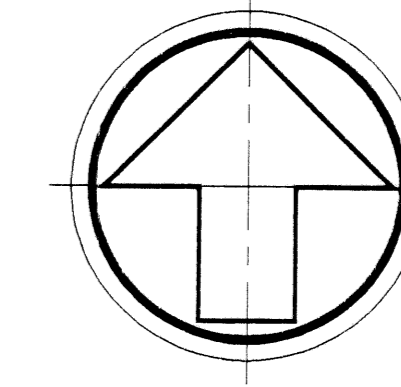


THE ANTILLES PLAT

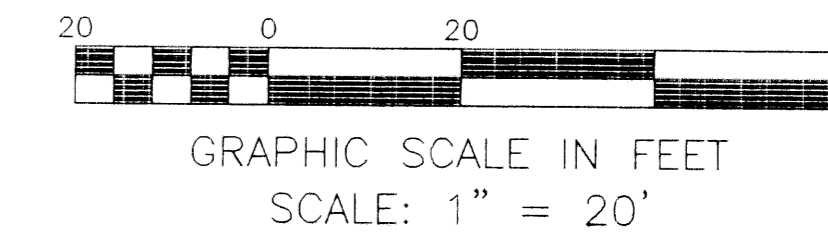
A RESUBDIVISION OF LOTS 1 AND 2, BLOCK D, JOHN B. REID'S VILLAGE (PLAT BOOK 21, PAGE 95, P.B.C.R.)

SHEET 2 OF 2 SHEETS



4

STATE OF FLORIDA
COUNTY OF PALM BEACH
This Plat was filed for record
at _____ M., this _____ day
of _____, 1994, and duly
recorded in Plat Book No. _____
on Pages _____ and _____
DOROTHY H. WILKEN, CLERK
BY: _____ DC



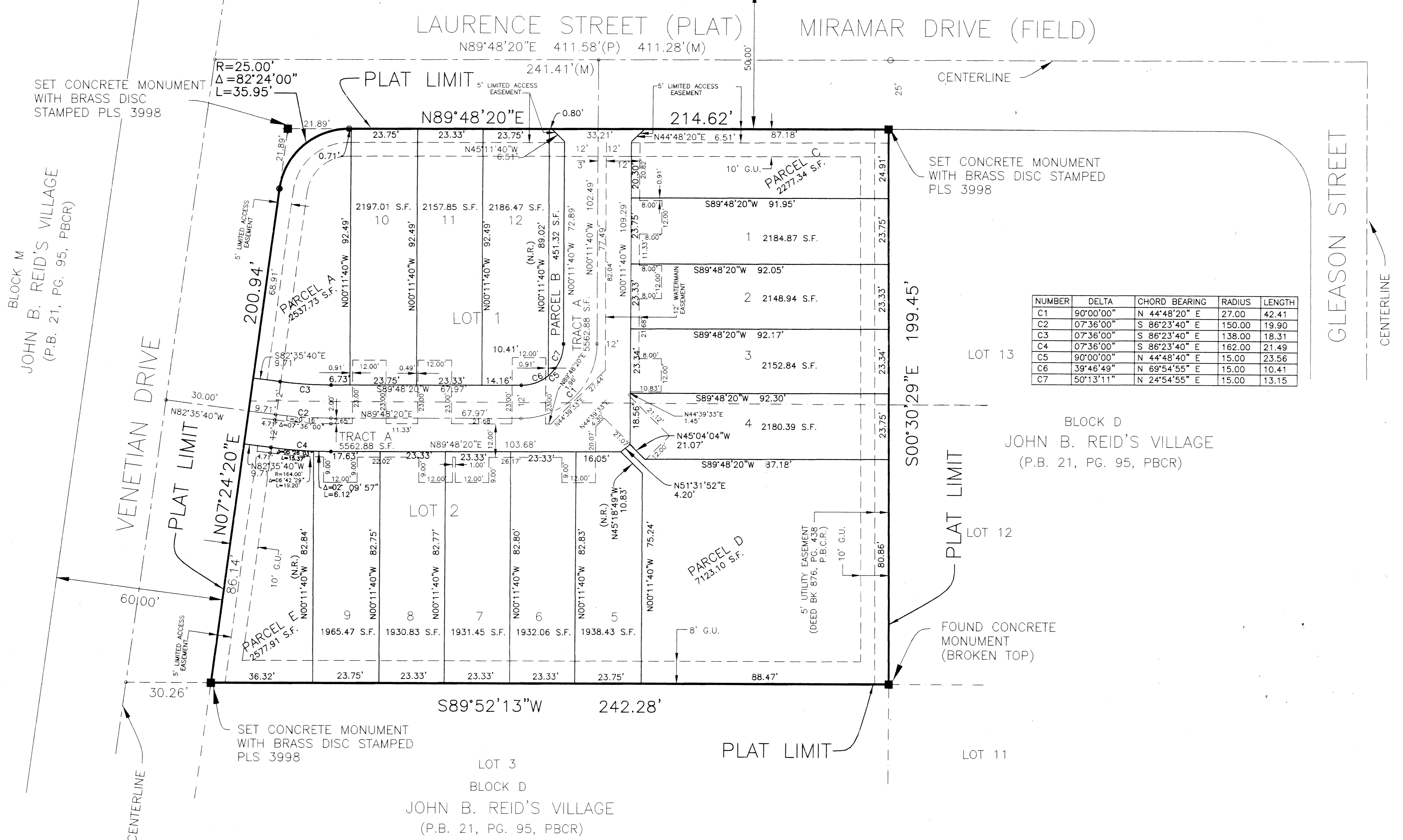
THIS INSTRUMENT PREPARED BY:
MICHAEL D. ROSE, PLS

SDA SHAH DROTOS & ASSOCIATES ENGINEERING SURVEYING & PLANNING

4901 N.W. 17th Way • Suite 404 • Ft. Lauderdale, FL 33309
PH: 305-776-7604 • FAX: 305-776-7608

BLOCK C
JOHN B. REID'S VILLAGE
(P.B. 21, PG. 95, PBCR)

MAY 1994



NUMBER	DELTA	CHORD BEARING	RADIUS	LENGTH
C1	90°00'00"	N 44°48'20" E	27.00	42.41
C2	07°36'00"	S 86°23'40" E	150.00	19.90
C3	07°36'00"	S 86°23'40" E	138.00	18.31
C4	07°36'00"	S 86°23'40" E	162.00	21.49
C5	90°00'00"	N 44°48'40" E	15.00	23.56
C6	39°46'49"	N 69°54'55" E	15.00	10.41
C7	50°13'11"	N 24°54'55" E	15.00	13.15

SUBDIVISION # The Antilles Plat
BLOCK 75 PAGE 4
FLOOD ZONE - FLOOD HAZARD -
SE - ZONING -
PUD NAME c/Delray Bch.